



Fall Protection

3M™ DBI-SALA® 8 mm Permanent Horizontal Lifeline Systems

We put it all on  
the line, so you  
don't have to.



### Smarter software. Stronger hardware. Easier installation.

How do you improve on one of the best permanent horizontal lifeline (HLL) systems in the industry? You give it robust cloud-based software that makes it easy to calculate and design systems. Make it easier to install and use. Then you design it with components that make the system stronger and offer more uniform energy absorption.

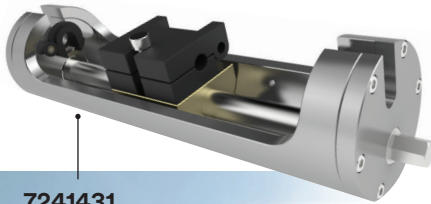
3M™ DBI-SALA® 8 mm Permanent Horizontal Lifeline Systems make it easier for you to design, specify and install HLL systems across a variety of industries, applications and orientations than ever before.



# Systems designed to make everyone's job easier.

## Installers and architects\*\*

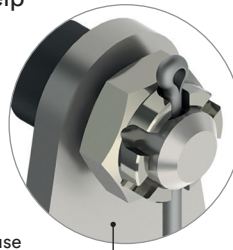
- ▶ Includes free cloud-based software to help calculate and design systems
- ▶ Systems can be used across a variety of industries, applications, orientations and geographies—making specification, sales and training easier for installers
- ▶ Easier installation with a removable tensioning tool



7241431  
Tensioning tool

## Safety managers

- ▶ Meets requirements of OSHA 1926.502
- ▶ Stainless steel components help provide long-term corrosion resistance\*



Stainless steel components

\*Some aggressive environments can cause corrosion and discoloration of stainless steel

## End users

- ▶ High-capacity and uniform energy absorption designed to balance peak force, capacity and deflection.
- ▶ Robust travelers offer continuous system travel, including bypass of intermediate and corner brackets
- ▶ Incorporated large D-ring for easy connection

7241420  
Detachable traveler



3500214

## 3M™ DBI-SALA® Nano-Lok™ edge Quick-Connect Self-Retracting Lifeline

8 ft. (2.4 m) lifeline with 3/16 in. (5 mm) galvanized steel wire rope and aluminum captive carabiner, quick connector for harness mounting.



## Wall and Floor Applications

- ▶ Designed for use on modern building projects, refurbishments and industrial safety applications
- ▶ Can be fitted to steel beams, concrete and brickwork
- ▶ Suitable for use on older roof constructions in conjunction with fabricated anchor posts\*

\*Anchor posts not supplied by 3M Fall Protection.

\*\*Each system must be designed and analyzed by a qualified person under the requirements of OSHA 1910.140, 1926.502 and/or other applicable local standards. When designed by a professional and inclusive of a full documentation package as specified, this system may meet the requirements of ANSI Z359.6.



## Overhead Applications

- ▶ Targeted to meet the needs of transport and industrial applications
- ▶ Specifically designed for work at height on trains, trucks, aircraft, crane walkways and loading bays
- ▶ Supports self-retracting lifelines and controlled rate descent devices up to 33.1 lbs.
- ▶ Allows up to 200 ft. single span for one user and up to 100 ft. single span for multiple users\*



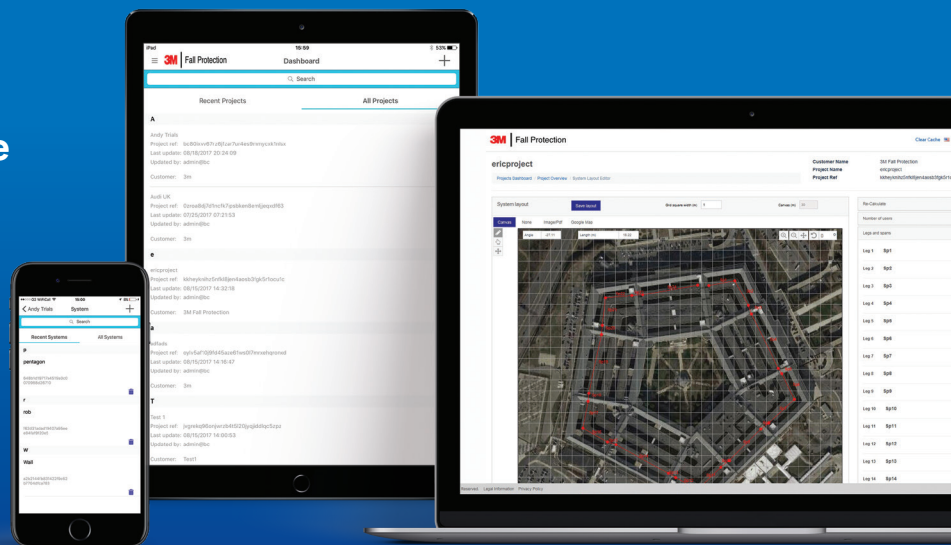
3504550

3M™ DBI-SALA® Ultra-Lok™  
RSQ™ Self-Retracting Lifeline

Dual mode design allows for a simple,  
effective rescue should a fall event occur.

## 3M™ DBI-SALA® 8 mm Permanent HLL Systems include calculation software.

Build and specify solutions with cloud-based software as robust as the systems it supports. It lets you accurately calculate fall distances and produces a full technical report for your clients. Access project data from your desktop, laptop, tablet or phone anywhere, anytime. Now you can calculate, build and document your systems so ordering and installation is easier than before.



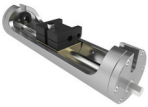


\*The number of system users and span lengths must be verified by the calculation software.

# System Components

		Description	Part #	Breaking Strength	Weight	Wall/floor applications	Overhead applications
Travelers		8 mm detachable traveler	7241420	5,000 lbf	2.6 lbs.	✓	✗
		8 mm overhead traveler	7241421	5,000 lbf	1.7 lbs.	✗	✓
Intermediate brackets		8 mm intermediate bracket	7241412	5,400 lbf	0.4 lbs.	✓	✓
		8 mm variable bracket	7241413	5,400 lbf	0.7 lbs.	✓	✗
		8 mm overhead bracket	7241414	5,400 lbf	0.6 lbs.	✗	✓
		8 mm 45-degree intermediate bracket	7241415	5,000 lbf	0.4 lbs.	✓	✗
Energy absorbers		11 kN peak force, 0.8 kN system tension energy absorber	7241422	8,540 lbf	6.4 lbs.	✓	✗
		19 kN peak force, 0.8 kN system tension energy absorber	7241426	8,540 lbf	6.4 lbs.	✓	✗
		19 kN peak force, 24 kN system tension energy absorber	7241427	8,540 lbf	7.1 lbs.	✗	✓
Corners		90-degree internal corner	7241406	8,540 lbf	4.0 lbs.	✓	✓
		90-degree post mount corner	7241408	5,000 lbf	1.3 lbs.	✓	✗
		45-degree internal corner	7241409	8,540 lbf	3.5 lbs.	✓	✓
End anchors		8 mm straight eye	7240122	8,540 lbf	0.8 lbs.	✓	✓
		Multi-fix anchor plate	7241417	8,540 lbf	3.3 lbs.	✓	✓

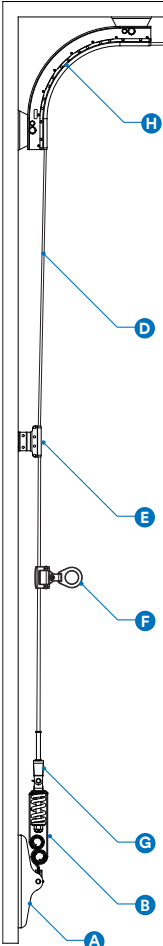
## System Components (continued)

		Description	Part #	Breaking Strength	Weight	Wall/floor applications	Overhead applications
Terminations		8 mm hex swage stud, pass through	7241430	8,540 lbf	0.7 lbs.	✓	✓
		8 mm hex swage toggle	7234011	8,540 lbf	0.7 lbs.	✓	✓
Joiner		8 mm hex swage joiner	7234012	8,540 lbf	0.3 lbs.	✓	✓
Cables**		8 mm 7 × 7 stainless steel cable	7240211	8,700 lbf	0.5 lbs.	✓	✓
		8 mm 1 × 19 stainless steel cable	7240212	10,565 lbf	0.7 lbs.	✓	✓
Tensioning tool		Tensioning tool for installation	7241431	—	9.3 lbs.	✓	✓

\*All system components are stainless steel

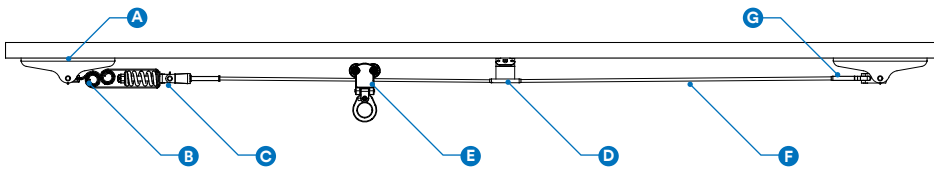
\*\*7 × 7 cable is more commonly used in low-tension applications; 1 × 19 cable is more commonly used in high-tension applications (e.g. overhead)

## Installation Examples - Wall & Overhead



### Corner wall system

A Multi-fix anchor plate	7241417
B 4270 lbf peak force, 0.8 kN system tension energy absorber	7241426
C Hex swage stud, pass through	7241430
D 8 mm 7 x 7 SS cable	7240211
E 8 mm intermediate bracket	7241412
F 8 mm standard traveler	7241420
G Hex swage toggle	7234011
H 90-degree internal corner	7241406



### Straight overhead system

A Multi-fix anchor plate	7241417
B 4270 lbf peak force, 24 kN system tension energy absorber	7241427
C Hex swage stud, pass through	7241430
D 8 mm overhead bracket	7241414
E Overhead traveler	7241421
F 8 mm 1 x 19 stainless steel cable	7240212
G Hex swage toggle	7234011



## Recommended 3M™ Fall Protection Products

For use with 3M™ DBI-SALA® 8 mm Permanent Horizontal Lifeline Systems



**3504430**

**3M™ DBI-SALA® Ultra-Lok™ Self-Retracting Lifeline** –  
30 ft. (9.1 m) of 3/16 in. (5 mm) galvanized steel wire rope with swivel snap hook



**1100835**

**3M™ DBI-SALA® Delta™ Comfort Vest-Style Climbing Harness** –  
Back and front D-rings, tongue buckle leg straps, comfort padding (size Medium)



**3320030**

**3M™ DBI-SALA® Self-Rescue Device** –  
50 ft. (15.2 m) detachable self rescue system, self contained nylon pack with molded padding

**For more information contact:**  
[EngineeredSystems-FP@mmm.com](mailto:EngineeredSystems-FP@mmm.com)



**3M Fall Protection**  
3833 SALA Way  
Red Wing, MN 55066 USA

Phone 800-328-6146  
Email [3mfallprotection@mmm.com](mailto:3mfallprotection@mmm.com)  
Web [3M.com/FallProtection](http://3M.com/FallProtection)

3M, DBI-SALA, Nano-Lok, Delta and Ultra-Lok are trademarks of 3M Company and its affiliates.  
© 3M 2018. All rights reserved.